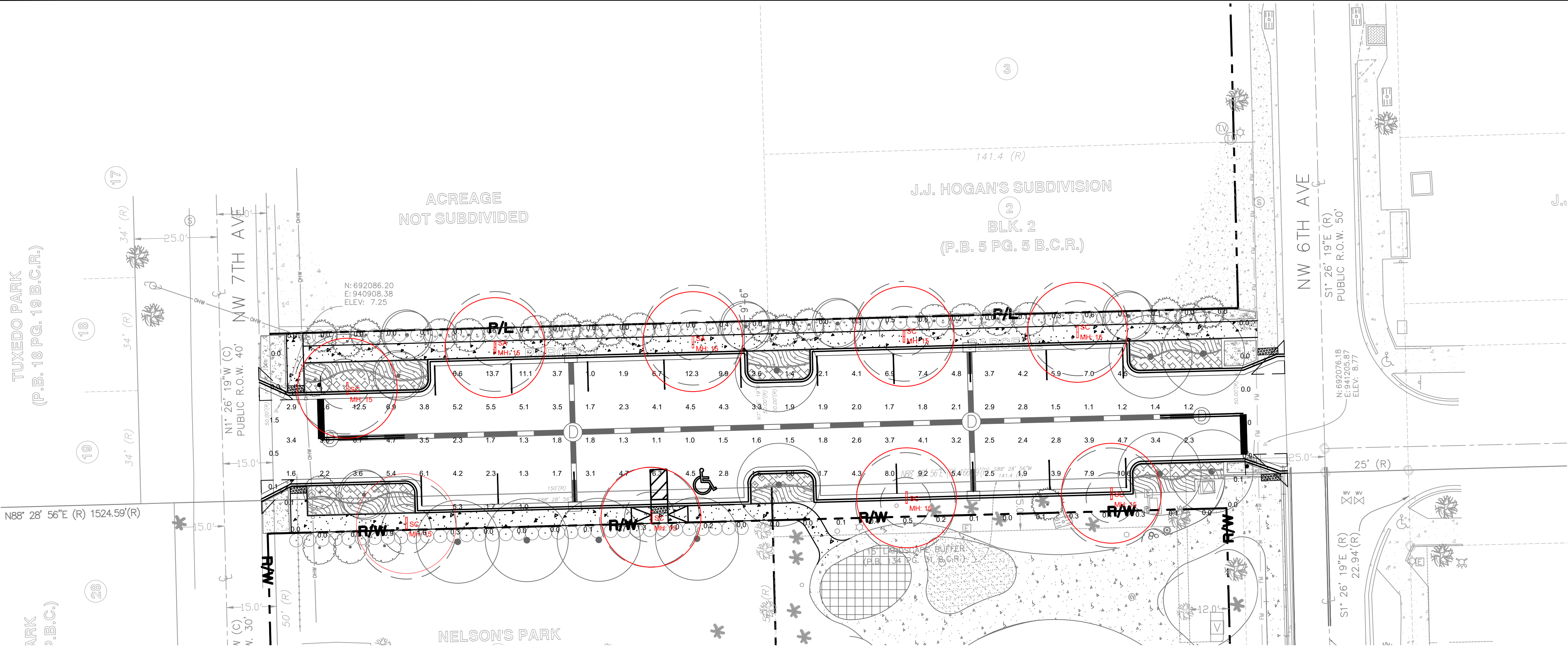


Plotted By: Villalon, Teresa Sheet Set: ANNIE ADDERLY GILLIS PARKING LOT Layout: C4.00 PHOTOMETRIC PLANS August 15, 2025 03:35:33pm K:\VTL-Civil\040 Jobs\040985115 E-20-20A WA#1 Gillis Parking Lot Design\CAD\PlanSheets\C4.00 PHOTOMETRIC PLANS.dwg  
This document, together with the concepts and designs presented herein, as an instrument of service, is intended only for the specific purpose and client for which it was prepared. Reuse of and improper reliance on this document without written authorization and adaptation by Kimley-Horn and Associates, Inc. shall be without liability to Kimley-Horn and Associates, Inc.



#### LEGEND

- CENTER LINE OF ROADWAY
- RIGHT-OF-WAY OR PROPERTY LINE
- PROP CONCRETE SIDEWALK
- EXIST CONCRETE SIDEWALK
- PROP LIGHT POLE AND 50' RADIUS

#### Photometrics Calculation Software Generated Luminaire Schedule

Symbol	Qty	Label	Arrangement	Lum. Lumens	Arr. Lum. Lumens	LLF	Lum. Watts	Arr. Watts
	2	SA	Single	8137	8137	0.900	106	106
	7	SC	Single	6904	6904	0.900	106	106

#### Calculation Summary

Label	CalcType	Units	Avg	Max	Min	Avg/Min	Max/Min
PARKING LOT	Illuminance	Fc	3.91	13.7	1.0	3.91	13.70
PROPERTY LINE AT 5FT AFG	Illuminance	Fc	0.23	1.6	0.0	N.A.	N.A.

#### ANNIE ADDERLY GILLIS

#### LIGHTING FIXTURE SCHEDULE

TYPE	DESCRIPTION	MANUFACTURER	CATALOG NUMBER	VOLT	LAMP COLOR	LUMENS	LAMP TYPE	DIM TYPE	WATTS	MOUNTING	NOTES
SA	LED SITE LUMINAIRE	LIGMAN	ULI-21172-106W-T4-W40-FINISH-15'-120/277V-HSS	UNV	4000K	8137	LED	N/A	106	POLE	1, 2
SC	LED SITE LUMINAIRE	LIGMAN	ULI-21172-106W-T3-W40-FINISH-15'-120/277V-HSS	UNV	4000K	6904	LED	N/A	106	POLE	1, 2

#### FIXTURE SCHEDULE NOTES

NOTE 1 : ADVISE FINISH.

NOTE 2: MOUNTED ON 15' POLE.

FOR QUESTIONS PERTAINING TO THIS FIXTURE SCHEDULE PLEASE CONTACT STEVE SANDERS @ LIGHTING DYNAMICS - 954-295-9766; SSANDERS@LIGHTINGDYNAMICS.COM

Teresa Villalon-Camacho State of Florida, Professional Engineer,  
License No. 94893

This item has been digitally signed and sealed by Teresa  
Villalon-Camacho on the date indicated here.

Signature must be verified on any electronic copies.

PLANS ARE IN NAVD 1988 DATUM  
CONVERSION EQUATION IS BELOW:  
(NAVD 1988) + 1.57' = (NGVD 1929)

THE PRESENCE OF GROUNDWATER SHOULD BE  
ANTICIPATED. CONTRACTOR'S BID SHALL  
INCLUDE CONSIDERATION FOR ADDRESSING THIS  
ISSUE AND OBTAINING ALL NECESSARY PERMITS.

Always call 811 two full business days before you dig to  
have underground utilities located and marked.

**Sunshine811.com**

**Kimley»Horn**

© 2024 KIMLEY-HORN AND ASSOCIATES, INC.  
8200 BETTERS ROAD, SUITE 200, JACKSONVILLE, FL 32224  
PHONE: 954-535-5100 FAX: 954-739-2247  
WWW.KIMLEY-HORN.COM REGISTRY No. 696

LICENSED PROFESSIONAL

TERESA VILLALON  
CAMACHO, P.E.

FL LICENSE NUMBER  
94893

KHA PROJECT  
040985115

DATE  
JULY 2025

SCALE AS SHOWN

DESIGNED BY TVC  
DRAWN BY TVC

CHECKED BY GB DATE

**PHOTOMETRIC  
PLANS**

ANNIE ADDERLY GILLIS

PARKING LOT

PREPARED FOR

CITY OF POMPANO BEACH

FL

SHEET NUMBER  
C4.00

2000033